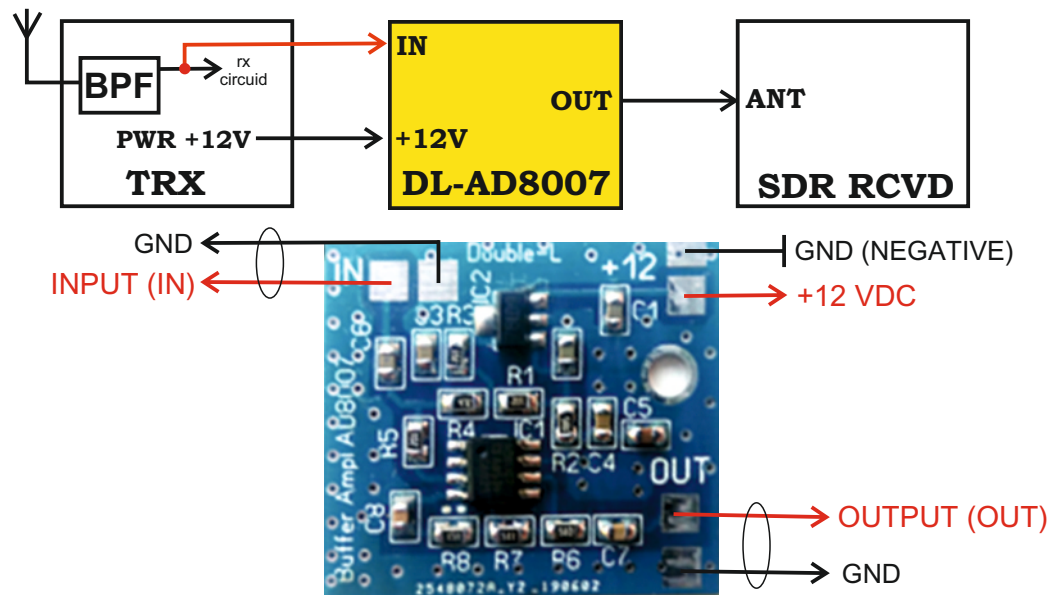
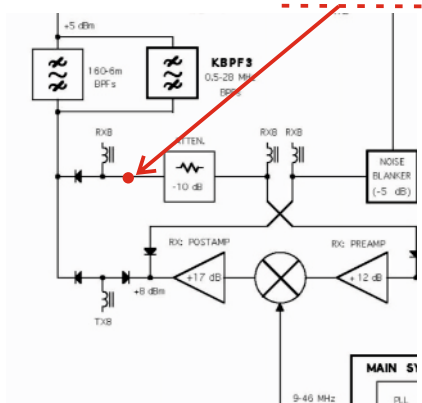


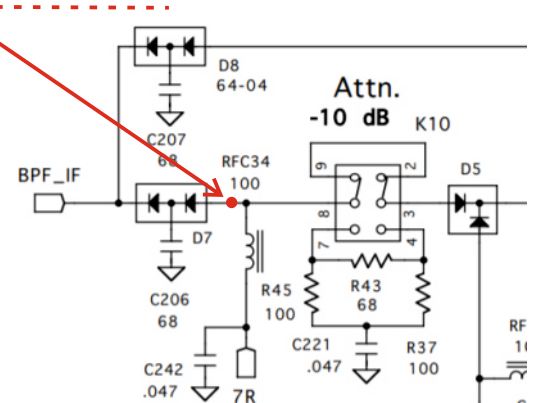
INSTALLATION

Buffer Amplifier DL-AD8007**Elecraft K3 Installation**

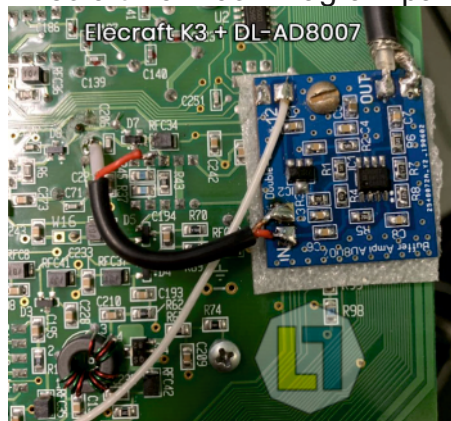
(One of the options - tested by UR0MC)
to buffer ampl DL-AD8007



Elecraft K3 Block Diagram part



Elecraft K3 Schematic part



Please make sure to turn the power off on your K3 while working on the installation. Double-L is not responsible for possible damage to your transceiver!